



103 Looseleigh Lane

Derriford, Plymouth, PL6 5HH

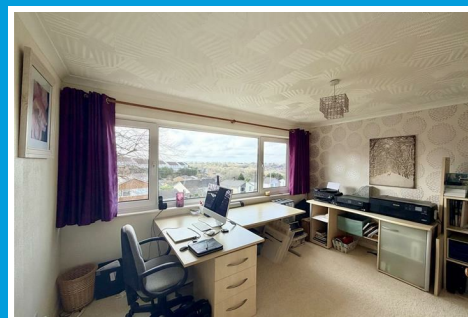
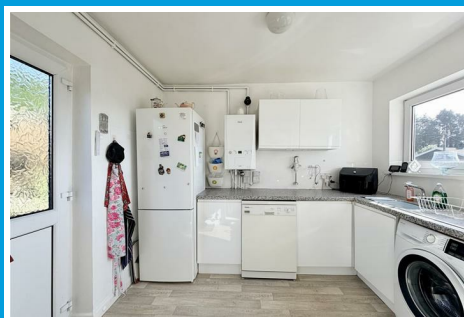
£475,000



103 Looseleigh Lane

Derriford, Plymouth, PL6 5HH

£475,000



LOOSELEIGH LANE, DERRIFORD, PLYMOUTH, PL6 5HH

LOCATION

Found in the southern part of Derriford in this popular, mainly residential area with a good variety of local services & amenities to hand. Nearby access to Derriford Hospital & Business Parks. Convenient access into the city & close by connection to major routes in other directions.

SUMMARY

A substantial detached house built circa 1969 & has been in the same ownership since 1987. The property looked after well, extensively upgraded & improved for example with a new central heating system including the boiler & radiators installed around 5 years ago, electrics also upgraded with new consumer units at a similar stage. The property providing a most well presented & comfortably appointed light & airy home.

On the ground floor an external porch, spacious central hall, generous-size dual aspect lounge, separate light & airy dining room, spacious integrated kitchen/breakfast room & useful utility room.

At first floor level a landing with access to 4 double bedrooms & a well appointed family bathroom/wc. A generous-sized loft over which is part floored for storage.

The property stands on a relatively large plot with front gardens, wide side areas & a good-sized rear garden which has been well kept. Excellent parking on the drive with space for 3 vehicles. Access to a substantially built garage with under-floor storage. This relatively wide plot afford potential to perhaps to extend on either side & create more parking or larger garage if desired, subject to of course any necessary consent.

ACCOMMODATION

GROUND FLOOR

STORM PORCH

7'6 x 5'1 (2.29m x 1.55m)

HALL

20'4 x 7'6 (including stairwell) (6.20m x 2.29m (including stairwell))

Storage cupboard.

LOUNGE

20' x 13'11 maximum (6.10m x 4.24m maximum)

Dual aspect with picture window to the front. Window & patio sliding door to the rear garden. Fireplace with gas supply laid on. Deep under-stairs storage cupboard.

SHOWER ROOM

7'10 x 5'9 (2.39m x 1.75m)

Window to the rear. White Roca suite with pedestal wash hand basin, close coupled wc & tiled shower with thermostatic control.

DINING ROOM

11'10 x 11'4 (3.61m x 3.45m)

Dual aspect with full height picture window to the front & side including a door opening to the front patio.

KITCHEN

15'7 x 7'10 (4.75m x 2.39m)

Window overlooking the rear garden. Quality fitted kitchen with a good range of built-in cupboard & drawer storage. Various lighting. Integrated appliances include Neff 4 ring gas hob with extractor hood over, Neff oven & 1.5 bowl sink unit.

UTILITY ROOM

9'9 x 8' (2.97m x 2.44m)

Window to the front. Door to the rear garden. Range of fitted storage. Sink. Wall mounted Ideal Logic combination C30 gas fired boiler servicing the central heating & domestic hot water.

FIRST FLOOR

LANDING

Airing cupboard. Access hatch to loft.

BEDROOM ONE

17' x 10' (5.18m x 3.05m)

Two windows to the front enjoying far reaching views. Built-in cupboard & wardrobe with mirror fronted doors.

BEDROOM TWO

13'3 x 10' (4.04m x 3.05m)

Picture window to the front with long views.

BEDROOM THREE

39'4" x 29'6" 32'9" floor area (12' x 9'10 floor area)

Window overlooking rear garden. Built-in storage.

BEDROOM FOUR

10'10 x 8'5 maximum (l-shaped) (3.30m x 2.57m maximum (l-shaped))

Window to the rear overlooking to back garden.

BATHROOM

7' x 6'6 (2.13m x 1.98m)

Quality white suite with twin grip panelled bath, close coupled wc & wash hand basin.

EXTERNALLY

A very gently sloping tarmac drive provides off-street parking with space for 3 vehicles & access to the garage. Next to the garage the drive is 14ft wide. The property stands on a wide & deep plot with front garden incorporating front set patio, lawn & mature tree. Wrapping around on the west side with a further 14ft wide lawned side garden & pathway leading around to the rear. A 24ft deep landscaped rear garden with lawn, central wide paved patio borders & variety of bushes & shrubs. Cold water tap.

COUNCIL TAX

Plymouth City Council

Council Tax Band: F

SERVICES

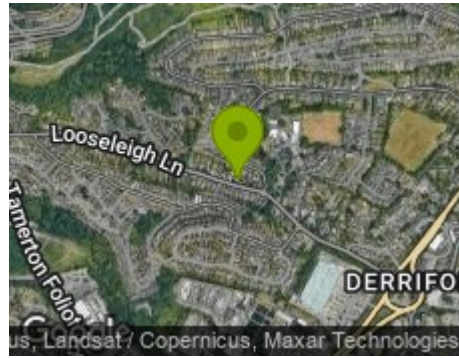
The property is connected to all the mains services: gas, electricity, water and drainage.



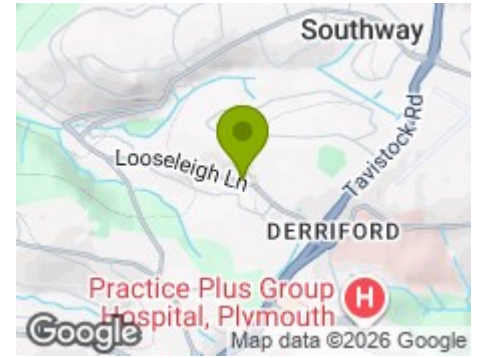
Road Map



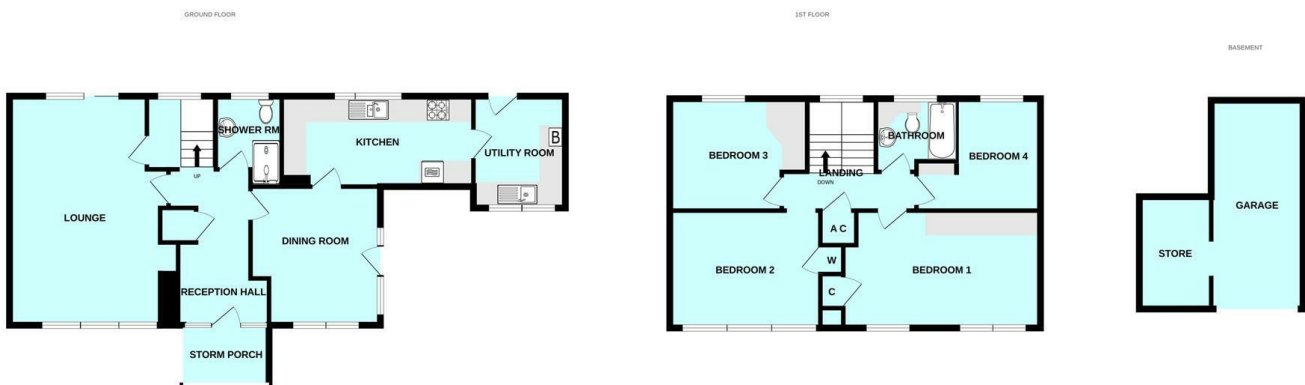
Hybrid Map



Terrain Map



Floor Plan

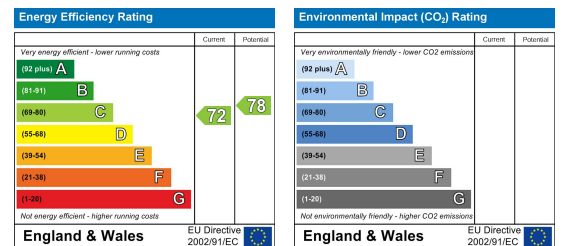


Made with Metropix ©2026

Viewing

Please contact our Plymouth Office on 01752 664125 if you wish to arrange a viewing appointment for this property or require further information.

Energy Efficiency Graph



These particulars, whilst believed to be accurate are set out as a general outline only for guidance and do not constitute any part of an offer or contract. Intending purchasers should not rely on them as statements of representation of fact, but must satisfy themselves by inspection or otherwise as to their accuracy. No person in this firm's employment has the authority to make or give any representation or warranty in respect of the property.